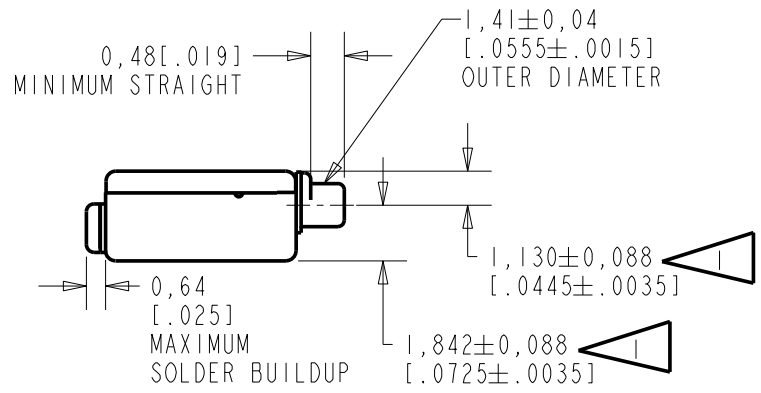
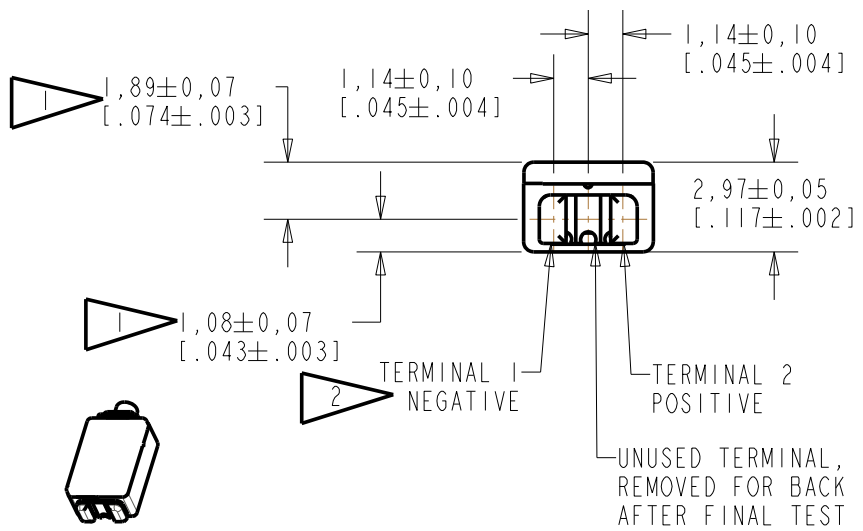
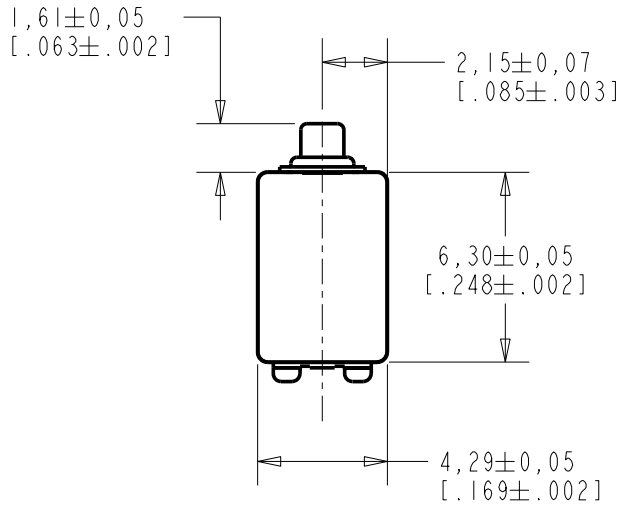


**ED-26821-000**  
**SHT 1.1**

NOTE:  
 1 LOCATED FROM TWO SURFACES FOR CUSTOMER CONVENIENCE. ONLY APPLICABLE FROM ONE SURFACE, NOT TO BE USED TOGETHER. HORIZONTAL LOCATION FOR TERMINAL CENTERED TO  $\pm 0,17$  [.007].  
 2 A POSITIVE GOING VOLTAGE AT TERMINAL 2 RELATIVE TO TERMINAL 1, CAUSES A DECREASE IN PRESSURE AT THE SOUND OUTLET.



NOMINAL WEIGHT  
 .31 GRAM

DIMENSIONS IN MILLIMETERS [INCHES]

Revision	C.O. #	Implementation Date	RELEASE LEVEL	REVISION
C	C10107990	8-25-08	Active	C
B	C10105972	7-3-07		
A	C10103360	11-1-05		

SCALE:	<b>4:1</b>	DR. BY	DATE
DO NOT SCALE DRAWING		MMM	11-1-05
TITLE:	<b>RECEIVER</b>	GJP	11-2-05
	ED-26821-000	APP. BY	DATE
	OUTLINE DRAWING	GJP	11-2-05
	<b>SHT 1.1</b>		

**KNOWLES ELECTRONICS**  
 ITASCA, ILLINOIS U.S.A.

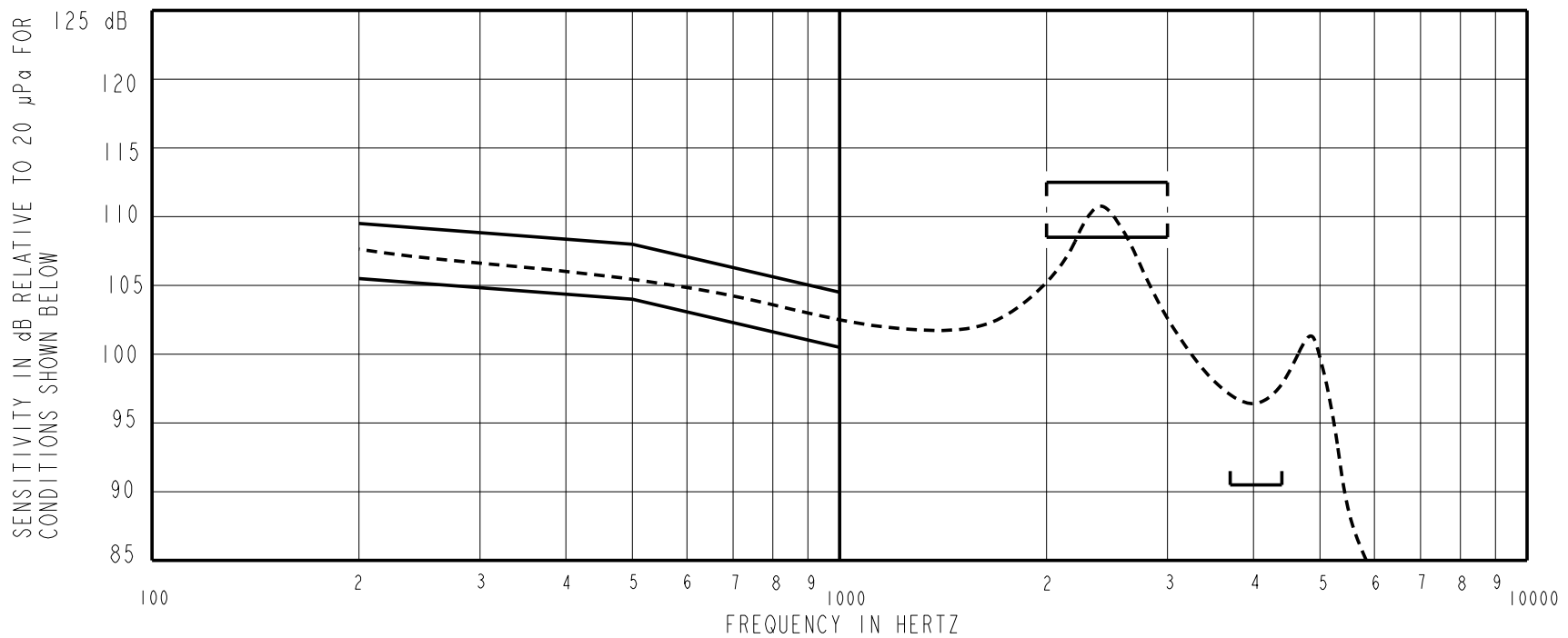
**DESCRIPTION**

NO DAMPING

ED-26821-000  
SHEET 2.1

AN ED RECEIVER WITH LOW IMPEDANCE COIL AND REAR VENT OPENING ON THE CENTER PAD OF THE TERMINAL

CONSTANT VOLTAGE DRIVE CONDITIONS (WITH VENT SEALED)



**ACOUSTICAL**

SENSITIVITY  
DEVICE WILL PRODUCE THE SPL LISTED BELOW UNDER TEST CONDITIONS DESCRIBED IN TABLE 3.  
NOMINAL SENSITIVITY AT 1 kHz IS dB RELATIVE TO 20µPa. ALL OTHER VALUES  
IN dB RELATIVE TO THE SENSITIVITY AT 1 kHz. TEST DATA MEASURED WITH VENT SEALED.

FREQUENCY (Hz)	MINIMUM	NOMINAL	MAXIMUM
200	+3.0	+5.0	+7.0
500	+1.5	+3.5	+5.5
1000	-2.0	102.5	+2.0
2000-3000	+6.0	+8.0	+10.0
3700-4400	-12.0	---	---

PORT LOCATION: 12C

TABLE 1.

TOTAL HARMONIC DISTORTION  
DEVICE WILL NOT EXCEED TOTAL HARMONIC DISTORTION LEVELS LISTED BELOW.

FREQUENCY (Hz)	DRIVE (V RMS)	DC BIAS (MA)	LIMIT (%)
500	0.149	0	10
780	0.053	0	5
1175	0.053	0	5

TABLE 2.

TEST CONDITIONS

NOMINAL SOURCE VOLTAGE	0.053 Vrms, 0 Vdc BIAS
SOURCE IMPEDANCE	< 1 Ω
TUBING	10 mm (.394) LONG, 1 mm (.039) ID.
COUPLER CAVITY	2 CC SIMULATED ANSI S3.7 TYPE HA-3, (IEC 126)

TABLE 3.

**ELECTRICAL**

DC RESISTANCE	3.3Ω ±10%
IMPEDANCE @ 500 Hz	7.1Ω ±15%
IMPEDANCE @ 1 kHz	10.2Ω ±20%

TABLE 4.

ISOLATION: CASE WILL BE ELECTRICALLY ISOLATED FROM THE COIL CIRCUIT

Revision	C.O. #	Implementation Date	RELEASE LEVEL	REVISION
C	C10107990	8-25-08	<b>Active</b>	<b>C</b>
B	C10105972	7-3-07		
A	C10103360	11-1-05		
WHEN TEST LIMITS ARE USED TO ESTABLISH INCOMING INSPECTION ACCEPTANCE/REJECTION CRITERIA, CORRELATION OF TEST EQUIPMENT WITH KNOWLES IS ALSO REQUIRED FOR ELIMINATION OF EQUIPMENT AND TEST METHOD VARIATION			DR. BY	DATE
TITLE: <b>RECEIVER</b> PERFORMANCE SPECIFICATION			ED-26821-000	MMM 11-1-05
			<b>SHT 2.1</b>	GJP 11-2-05
			APP. BY	DATE
			GJP	11-2-05

**KNOWLES ELECTRONICS**  
ITASCA, ILLINOIS U.S.A.